

COMPETITION RULES

- o Artwork must conform to all the above specifications.
- o No entries will be considered without the school's stamp.
- o Minimum support may be enlisted from an educator.
- o The competition closes on the 31 August 2006. No entries will be considered after this date.
- o The winners will be notified in writing in September 2006.
- o All submissions will become the property of South African National Parks and may be used for exhibition and print purposes.
- o The prize is not transferable and cannot be converted into cash.
- o The judge's decision is final and no correspondence will be entered into.
- o Employees of SANParks and their families may not enter.

Entries that do not comply with the above rules will be disqualified and not returned

LIST OF SOUTH AFRICAN NATIONAL PARKS

Mpumalanga	1. Kruger National Park
Gauteng	2. Groenkloof National Park
Limpopo	3. Mapungubwe National Park 4. Marakele National Park
Northern Cape	5. Kgalagadi National Park; 6. Namaqua National Park 7. Au-grabies National Park 8. Richtersveld National Park 9. Vaalbos National Park
Free State	10. Golden Gate National Park
Western Cape	11. Bontebok National Park 12. Tankwa Karoo National Park 13. West Coast National Park 14. Agulhas National Park 15. Table Mountain National Park
Eastern Cape	16. Tsitsikamma National Park 17. Mt Zebra National Park 18. Karoo National Park 19. Addo Elephant National Park 20. Wildemess National Park 21. Camdeboo National Park

ENTRY FORM

NAME AND ADDRESS OF SCHOOL: _____

LEARNERS' NAMES _____

GRADE _____

SCHOOL TEL: _____ FAX: _____

SCHOOL'S STAMP:

NAME OF TEACHER

I hereby certify that this work is the original work of the above learners.

Signed _____ 2006.

Know your South African National Parks

Contact Ms Bessy Makhuba at the South African National Parks

Tel: (012) 426-5205

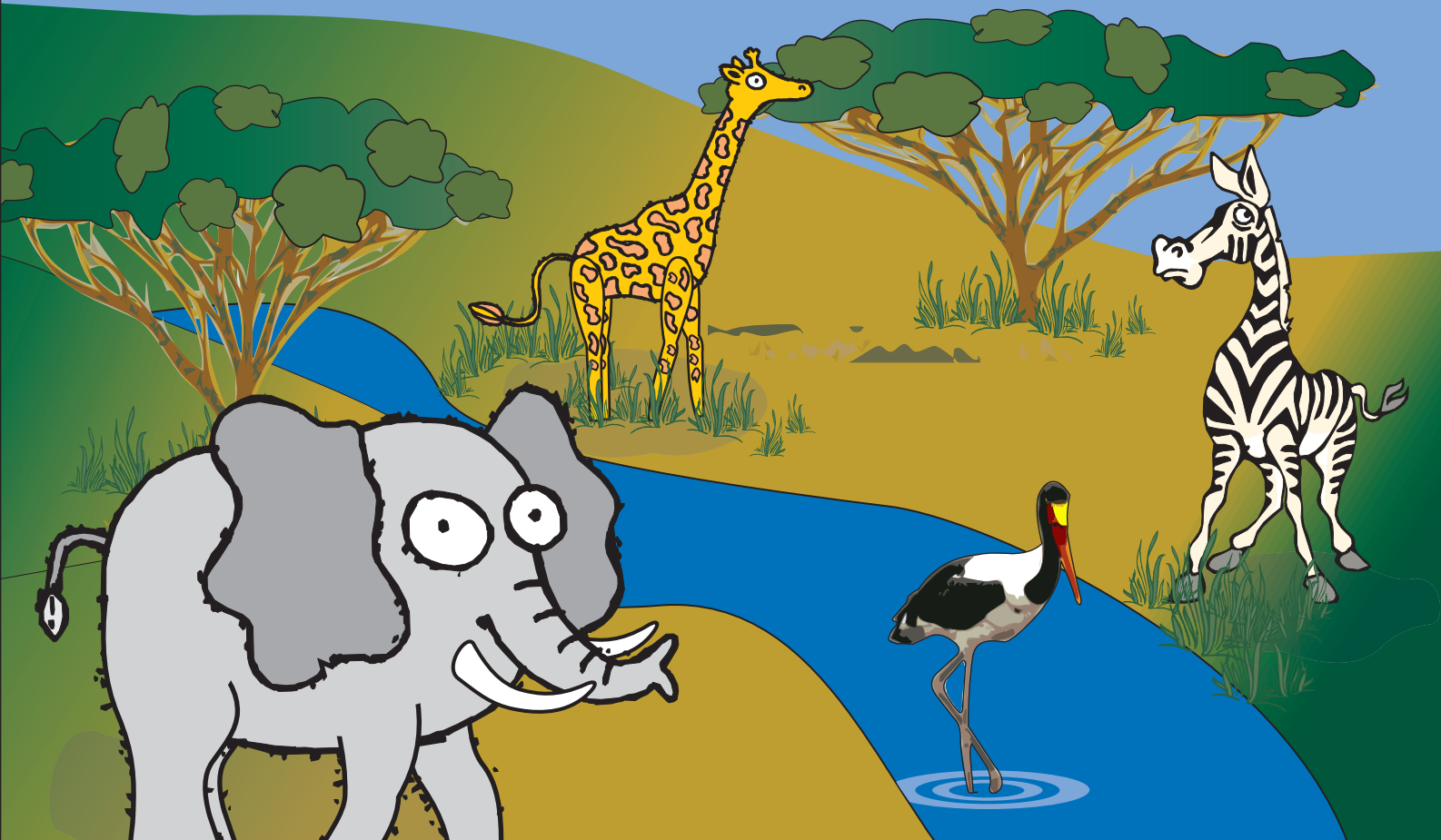
Fax: (012) 426-5547

Or visit www.sanparks.org for more information about this competition.

Know your South African National Parks



South African
NATIONAL PARKS



Calling all teachers and learners from Grade 3 to 7

Design a stamp Morula Kids Art Competition 2006

Be creative and **win**

a trip and a Go-Wild card for your team to a South African National Park (SANParks) and experience the magic of the wild

Aim: The aim is for schools and learners to showcase their knowledge of a South African national park showing the vital link between people and nature by designing a series of 5 postage stamps.

Designs:

- o Designs should be bright, eye-catching and bold.
- o Designs should show thorough research into the park of choice and include the People and Conservation theme using any of the following: People - Birds - Animals - Plants - Culture-Marine or Aquatic Life Insects - Landscape - Any other category that reflects people in conservation
- o Designs will be judged as a series that fit together

Media:

- o Pencil crayons, wax crayons, poster paints, oil pastels or koki pens may be used (Nothing must be stuck, pasted or attached to the design).

SABC
EDUCATION



Entry Requirements:

- o The competition is open to all Grades 3-7 South African Learners.
- o A group of five learners (same grade) may submit a series of 5 postage stamp designs to represent any one park of their choice from the 21 South African National Parks listed.
- o Only the reverse side of the entry form or a photostat copy of the original entry form may be used for artwork to be entered.
- o The school may submit as many entries as possible but only one submission per team.
- o Artwork must be submitted in sets of 5 (five) postage stamps.
- o Each stamp design must be on a separate page of the entry booklet.
- o Prior research should be conducted on all aspects of the park of choice.
- o Submit your completed entry forms to Morula Kids Art competition, SANParks, P.O. Box 787, Pretoria, 0001 or hand them in at 643 Leyds Street, Muckleneuk, Pretoria or any of the South African National parks closest to you by 31 August 2006.